

The following outline drawings give key dimensions for Black Beetle 4 wheel drive bogies and Black Bug single axle drive units.



C/- P.O. Rhyl, Victoria, 3923.

Dimensions of the Black Beetle depend upon the way the parts are assembled, which is determined by the wheelbase.

Note: Wheelbases from 23.75mm to 25.25mm are only possible if the Black Beetle has 27:1 gearing.

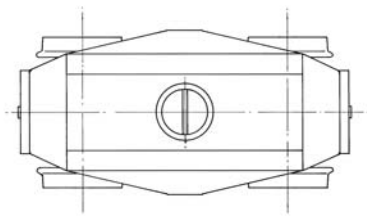
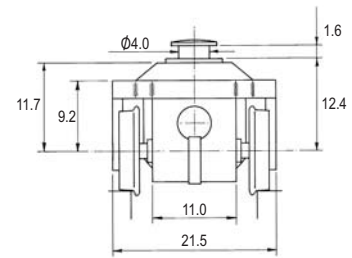
Table 1.

Wheelbase in mm	Assembly arrangement
23.75 to 28.75	A
29.0 to 29.5	B
29.75 to 32.75	A
33.0 to 35.75	B
36.0 to 40.0	C

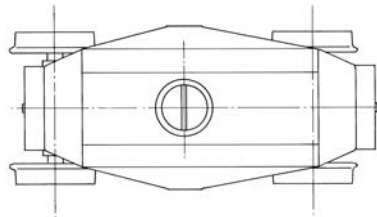
Table 2.

Speeds in scale mph per scale inch of wheel diameter at 12V.		
Wheelbase	Gear Ratio	
	15:1	27:1
23.75 - 25.25	N/A	1.7
25.5 - 29.5	3.2	1.7
29.75 - 40	2.0	1.1

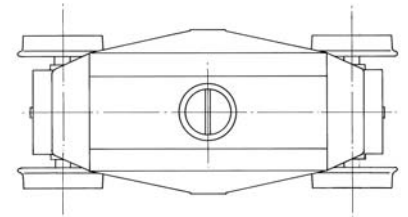
End elevation:
Common to type
A, B and C
Black Beetle.



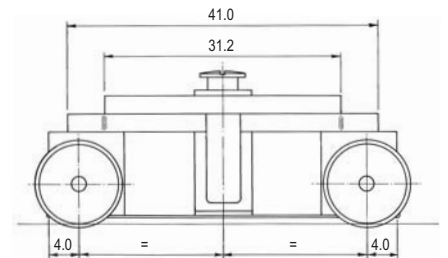
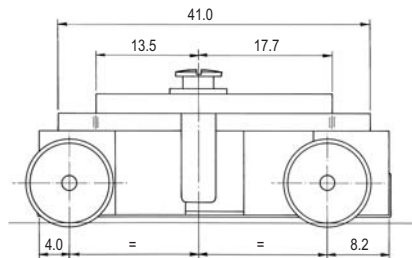
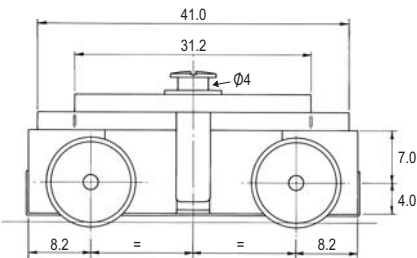
Arrangement A



Arrangement B



Arrangement C



Black Bug single axle drive unit.

Note: Black Bug with 27:1 gearing is shown.
For 15:1 gearing, the 21mm dimension on the elevation will reduce to 20mm.

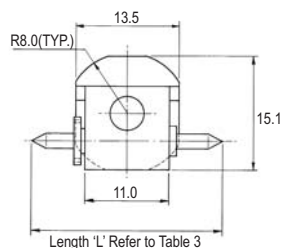
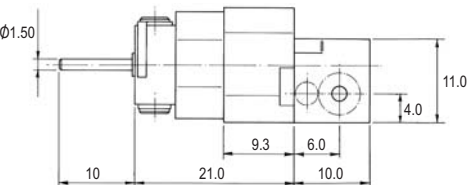
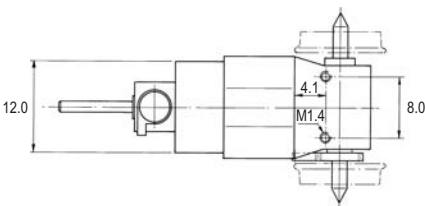


Table 3. Axle Length For Black Bug

Track Gauge	Axle Length 'L'
HO/OO 16.5mm	25mm
EM18.2mm, P4 18.83mm	26mm
On3 19.05mm	28mm
S and O gauge	Flush axles